

FAMILY AFFECT LIMITED

This document sets out Family Affect Ltd aims and objectives. It explains our values and principles, the services we provide and the way we provide them.

*Statement of
purpose
Volume 4*

Date: 21.06.24





Family Affect Ltd Statement of purpose

Families with Permanently Placed Children & Adolescents

A copy of this Statement of Purpose has been provided to Ofsted, is publicly available and is also available on request. This Statement of Purpose is reviewed and updated on a regular basis, at least annually.

The information provided meets the requirement of National Minimum Standards for Adoption, and the related regulations (Voluntary Adoption Agencies and Adoption Agencies (Misc. Amendments) Regulations 2003).

The Statement of Purpose is intended to provide information to: -

- Prospective adoptive parents
- Children and young people
- Family Affect Ltd staff
- Local authorities
- Birth family members
- Other adoption agencies
- Inspectors
- Members of the public

Family Affect are a family-run Ofsted registered adoption support agency which offers intensive therapeutic family work to children and families. Our aim is to enhance family life for both the child and parents or care providers. At Family Affect we aim to bring brightness & joy to people 's lives using an approach of **Compassion**, curiosity, **Acceptance**, attunement, **Kindness**, knowing, **Empathy**, engagement (CAKE) (inspired by PACE Dan Hughes)

Family Affect Aims: The overall aim of our intensive therapeutic family work is to enhance family life for both the child and parents. The specific aim is to reduce the deliberating effects caused by the child's exposure to trauma whilst increasing their psychological safety, ability to self-regulate & ability to rely on their parents as significant attachment figures in their life.



We aim is to ensure that children who are not able to live with their birth families grow up in safe, nurturing and healing families where they are able to develop to their full potential. We aspire to encourage adopted children to have a positive sense of themselves and a clear understanding of their history where they can develop a coherent personal narrative. We want children to have good self- esteem & confidence to be able to make friends and grow up in a family where fun and laughter are part of everyday life. We believe that the best way to do this is to ensure that adoptive families are provided with the comprehensive, high quality support they need, at the times that they need it. We believe that it is essential that we learn from what works & ensure that we keep ourselves updated of the highest standard of professional practice based on the most up to date theory and research.

Alongside this, we also recognise the impact on birth families who lose their children to adoption. We want to ensure that birth families receive the support they need in order that they can start to heal and move forward in their lives. As an agency, we understand that adoption has lifelong implications for all involved.

Our Values

- Respect for the individual
- A focus on healing and growth
- An understanding of the importance of joy within families
- Appreciation of the importance of listening and understanding
- Wanting to offer the very best service to every child and every adult we work with

Our Beliefs

- We believe that the child's welfare, safety and needs should be at the centre of the adoption process.
- We believe that a child's wishes, and feelings should be actively sought and fully taken into account at all stages & their views, wishes and feelings will be listened to and are considered of paramount importance.
- We believe that delays in adoption can have a severe impact on the health and development of children and should be avoided wherever possible.
- We believe that it is essential in the process of matching a child with his/her adoptive parents that as much information as possible is gained in order that informed decisions can be made.
- We believe to be able to provide a successful service we need to be able to connect with children & adults emotional states behind their 'detached



protector' & coping modes to help them to integrate their emotional states & live a meaningful life

- We believe playfulness & joy are important aspects of a healing adoptive family.
- We believe adults and children are individuals in their own right and that they are of equal worth whatever their race, culture, disability, gender, sexual orientation, social class, marital status, age, religion or other belief systems

Our Aims and Objectives

- To ensure that adopted children grow up as part of a loving family, who can meet their needs during childhood and beyond.
- To ensure that our services promote equality and do not discriminate against anyone on the basis of their age, marital status, gender, sexual orientation, disability, ethnic origin, religion or culture. Family Affect is fully committed to the active promotion of equal opportunity in the work it undertakes, its employment practices and in the provision of all its services. Every possible step will be taken to ensure that children, parents, carers, prospective parents, foster/kinship carers, consultants and staff are treated equally and fairly.
- To ensure that all our therapeutic services take into consideration current research and best practice in the field of adoption support.
- To ensure we incorporate creative and fun aspects in our support services.
- To ensure that all staff employed by Family Affect Ltd are appropriately qualified, experienced, recruited, supervised, have ongoing training & development & are supported in carrying out their responsibilities.
- To ensure we involve and consult service users in the delivery and development of services.
- To ensure we maintain confidentiality and security of all adoption records and information following GDPR
- To work with schools, as we believe sharing knowledge and adopting a joined-up holistic approach can help children with trauma and attachment difficulties. By increasing understanding of attachment and learning, we believe schools are better able to provide education in a way that children can access.
- With regards to our services for birth relatives, we aim to help birth parents come to terms with the loss of their child through a creative and flexible approach to counselling. We aim to not only provide an emotionally helpful and supportive service, but also to improve insight in order to change negative behavioural patterns.
- Our service objectives are to assist where appropriate in the quality of any contact between the child and birth parent.



Family Affect Ltd
Tarrifere
Thorpe-Le-
Soken
Essex
CO16 0EA

-
- Where children have been removed by the local authority because of concerns regarding abuse or neglect, we aim to support birth parents in understanding their responsibility in the circumstances that led to their child being removed and adopted. Doing so reduces the likelihood of repeated patterns of behaviour
 - We aim to assist birth parents in accessing any additional specialist support services that may be helpful to them.
 - We aim to work closely with local authority adoption and permanency teams to ensure our services remain consistent with their requirements.

Family Affect Ltd provides the following services:

Family Affect provide therapeutic interventions following a comprehensive and wide-reaching assessment of the needs of the family. This includes gaining an understanding of:

- The presenting needs and strengths of the family,
- The effect of trauma
- The impact of the relational trauma on the child's attachment relationships, emotional regulation and emotional well-being,
- The impact of attachment experiences and behaviour on relationships and the capacity of parents to parent their children with confidence, empathy and joy

Family Affect use multiple methods of assessment based upon research in areas of attachment theory, developmental trauma, neurobiology of trauma, attachment parenting & child development.

Children and parents, carers and teachers (where appropriate) are invited to take part in interviews, structured observation of interactions (Filmed & analysed) & complete questionnaires to gain a more detailed holistic understanding of the child & family dynamics. Once this information has been gathered and analysed, child/children and parents are invited back to Family Affect to spend time in the open countryside together with a therapist from the team doing therapeutic tasks. Homemade/cooked food is provided throughout the day. Also, parents have individual time with a therapist to share their concerns and perceptions of their child's or children's difficulties. Each child is able to spend time with a therapist, who uses verbal and non-verbal creative therapeutic techniques to help them to express their feelings, emotional states, images (which often do not have words), impulses, beliefs, attachments, their hidden internal world & defences.

Comprehensive Assessment Outcomes and Recommendations



All the information collated throughout the assessment process will be analysed. A detailed report will be produced from the analysis & recommendations will be made for the therapeutic interventions required for each individual child/family.

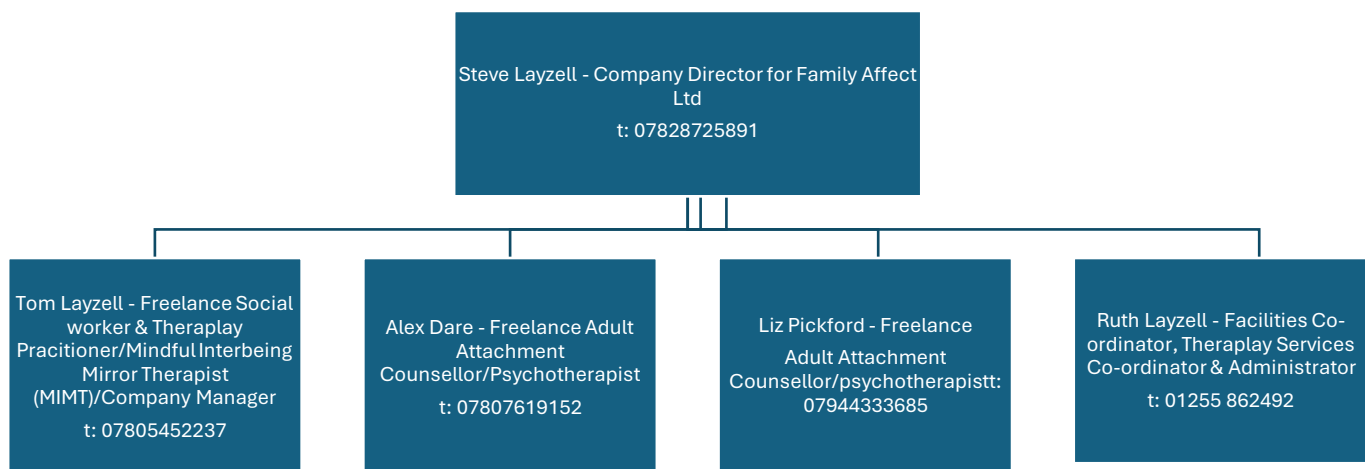
Therapeutic Interventions – Explained

- We offer training programmes for professionals as well as bespoke training for pre-adopters & adoptive parents. We are committed to offering a training programmes which delivers the latest thinking/up to date research on supporting children and young people to heal from early trauma.
- Post placement therapeutic support service
- Developmental trauma & attachment assessments
- Specialist attachment therapeutic services-
- Dyadic Developmental Psychotherapy (DDP)
- Theraplay®,
- Schema Therapy
- Mirror Therapy
- Sunshine Circles (Theraplay: social-emotional development_groups)
- Support & Sunshine Circles (attunement) for schools
- Therapeutic Life Story Work
- Therapeutic services to birth relatives
- Adoption counselling for adopted adults
- Supervision/Consultations for parents, teachers, social workers, teaching assistants, family workers etc
- Training and advice for schools regarding attachment, trauma, and learning



Organisational Structure

Structure of Family Affect Ltd



Reviewing the services, we provide

Family Affect Ltd has a variety of systems in place to monitor and review the services we provide. These include:

- Review reports, feedback & evaluation forms completed at the start & final points of the intervention
- Feedback forms from families (parents and children).
- Feedback questionnaire responses from local authorities.
- Internal evaluations.
- Standardised mental health measures.

Complaints Procedure



Family Affect Ltd
Tarrifere
Thorpe-Le-
Soken
Essex
CO16 0EA

Family Affect is always open to feedback. This is sometimes positive and sometimes there are lessons to be learned. Family Affect has a Complaints procedure which is designed to embrace the principle that all service users have access to the policy including children and young people. We encourage feedback from young people with our post box for ideas and concerns in our reception. All service users are encouraged to give feedback during and after assessment or treatment.

The policy for complaints is a transparent one with complaints being handled promptly, and the first stage of any complaint is to try and resolve it informally. Following this informal process there is a formal process if the dispute isn't resolved, & if required an independent process if there are lessons to be learned.

A copy of the agency's complaints procedure is available.

If you wish to make a formal complaint please contact Tom Layzell, registered manager, at tom.layzell@familyaffect.co.uk or Steve Layzell, company Director at steve.layzell@familyaffect.co.uk

The Statement of Purpose has been approved by the Directors of Family Affect Ltd and is subject to review annually, or more frequently if required.

Updated April 2024

Registration Authority

The name and address of the Registration Authority is:

OFSTED
Piccadilly Gate
Store Street
Manchester
M1 2WD

Email: enquiries@ofsted.gov.uk

Tel: 0300 123 1231

Web: www.ofsted.gov.uk

Yours Sincerely

Steve Layzell
Director Family Affect
Ltd
Theraplay Therapist/Social Worker
Accredited Dyadic Developmental Psychotherapy (DDP) practitioner
Schema Therapist
Social Work England registered



Family Affect Ltd
Tarrihere
Thorpe-Le-
Soken
Essex
CO16 0EA

This information is issued by
Family Affect Limited.

You can contact us in the following ways:

By email:
admin@familyaffect.co.uk

Visit our website:
www.familyaffect.co.uk

By telephone:
01255 862492

By post:
Family Affect Ltd
Headquarters
Tarrihere
Thorpe-Le-Soken
Essex
CO16 0EA